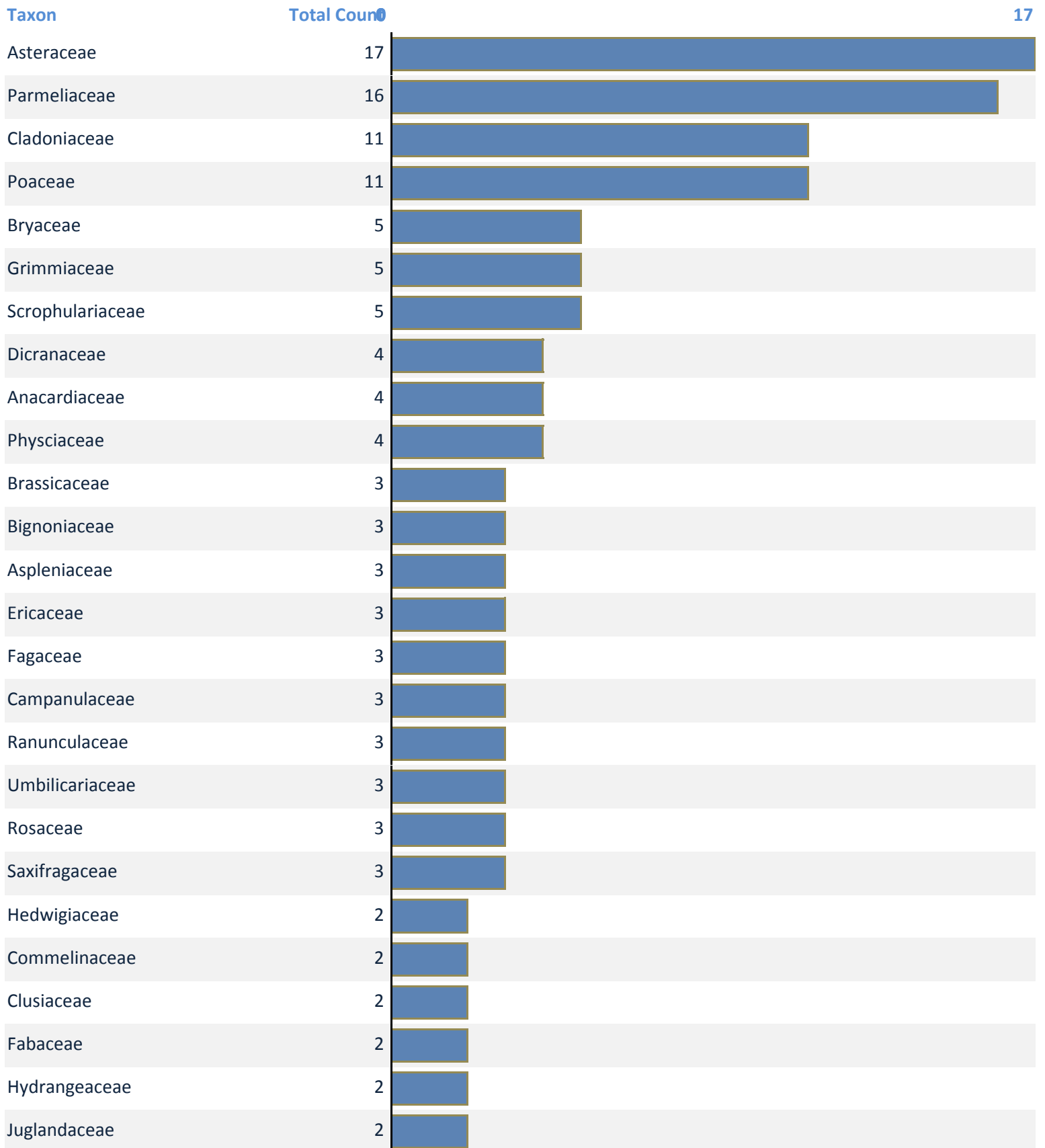


Specimen Counts for All Xeric Cliffs Flora - 2009 - 2011 Project Families

Project: ATBI Xeric Cliffs Flora



Taxon	Total Count	
Leucobryaceae	2	
Stereocaulaceae	2	
Pinaceae	2	
Staphyleaceae	1	
Dioscoreaceae	1	
Brachytheciaceae	1	
Crassulaceae	1	
Candelariaceae	1	
Caprifoliaceae	1	
Celastraceae	1	
Cephaloziellaceae	1	
Ulmaceae	1	
Urticaceae	1	
Rubiaceae	1	
Aceraceae	1	
Porpidiaceae	1	
Portulacaceae	1	
Pertusariaceae	1	
Pteridaceae	1	
Lecanoraceae	1	
Hymeneliaceae	1	
Diapensiaceae	1	
Vitaceae	1	
Cupressaceae	1	
Euphorbiaceae	1	
Rhamnaceae	1	
Dryopteridaceae	1	
Ditrichaceae	1	

Taxon	Total Count	17
Polytrichaceae	1	
Rhizocarpaceae	1	
Cyperaceae	1	
Hydrophyllaceae	1	