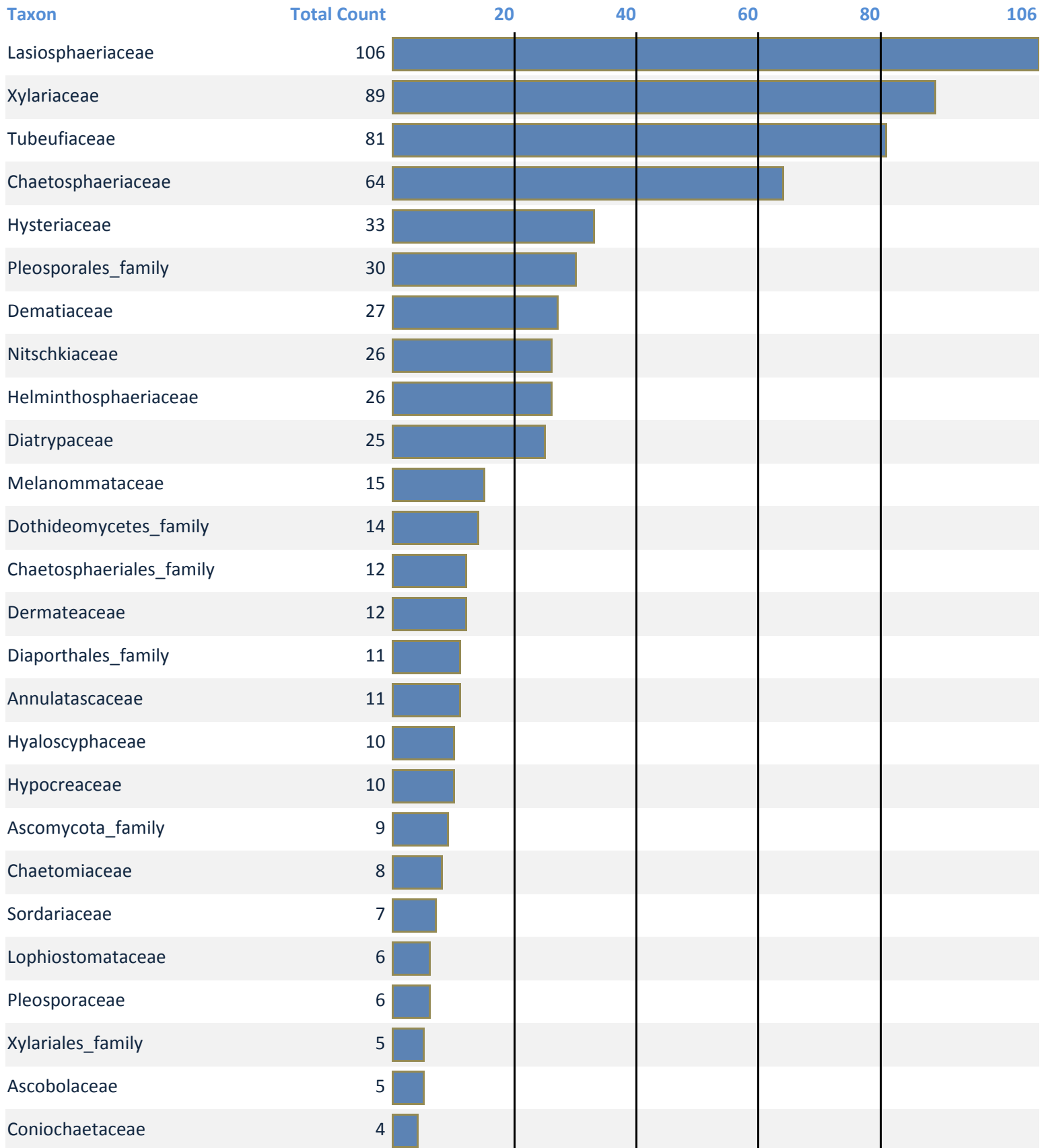
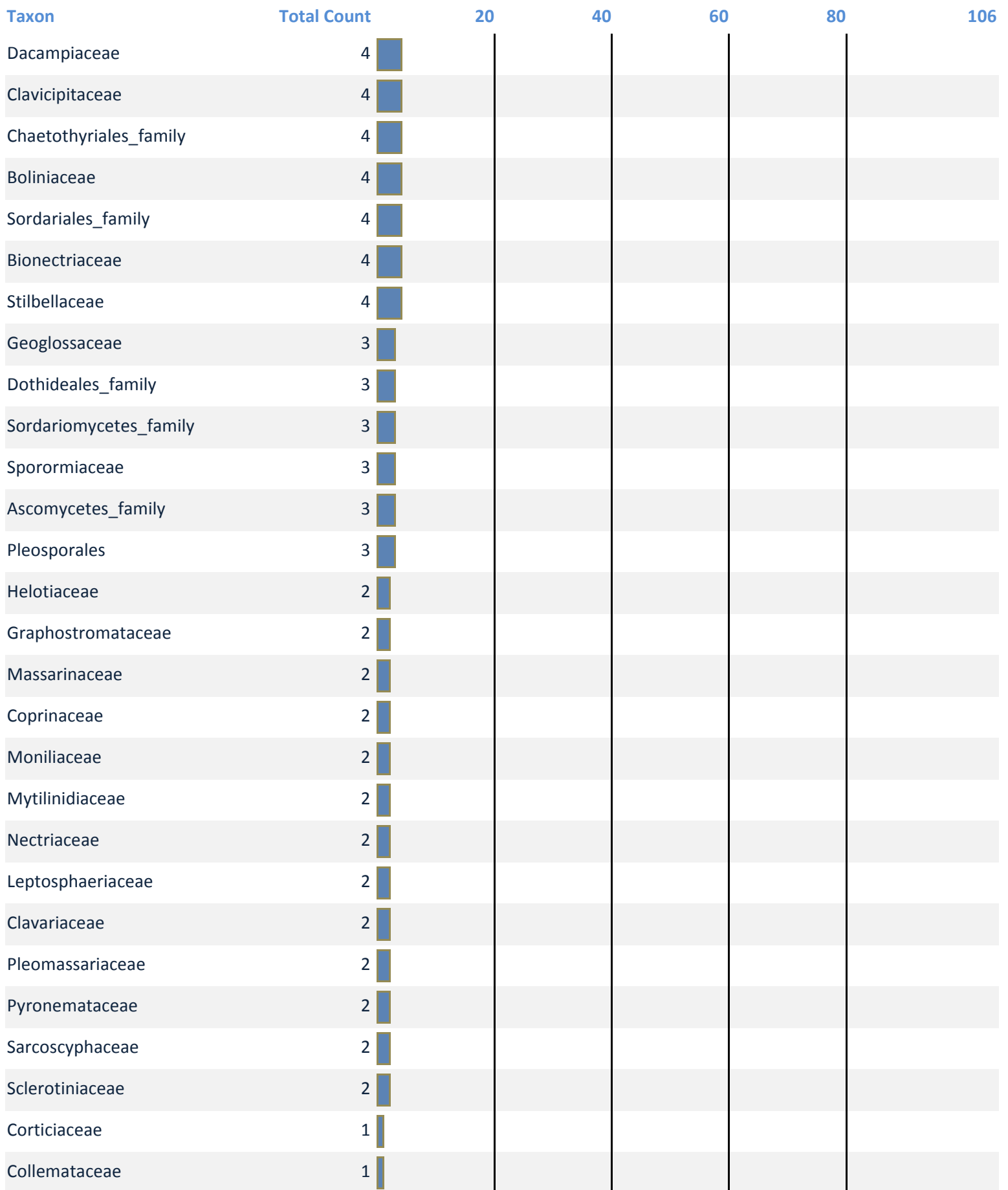


Specimen Counts for All Fungi - 2004 - 2010 Project Families

Project: ATBI Fungi





Taxon	Total Count	20	40	60	80	106
Parmeliaceae	1					
Tuberculariaceae	1					
Trichocomaceae	1					
Sphaerobolaceae	1					
Sordariomycetidae	1					
Sarcosomataceae	1					
Rhytismataceae	1					
Pyrenulales_family	1					
Leotiomyces_family	1					
Psathyrellaceae	1					
Fungi_family	1					
Orbiliaceae	1					
Myxotrichaceae	1					
Mycocaliciaceae	1					
Meruliaceae	1					
Lobariaceae	1					
Herpotrichiellaceae	1					
Hericiaceae	1					
Helvellaceae	1					
Pseudeurotiaceae	1					