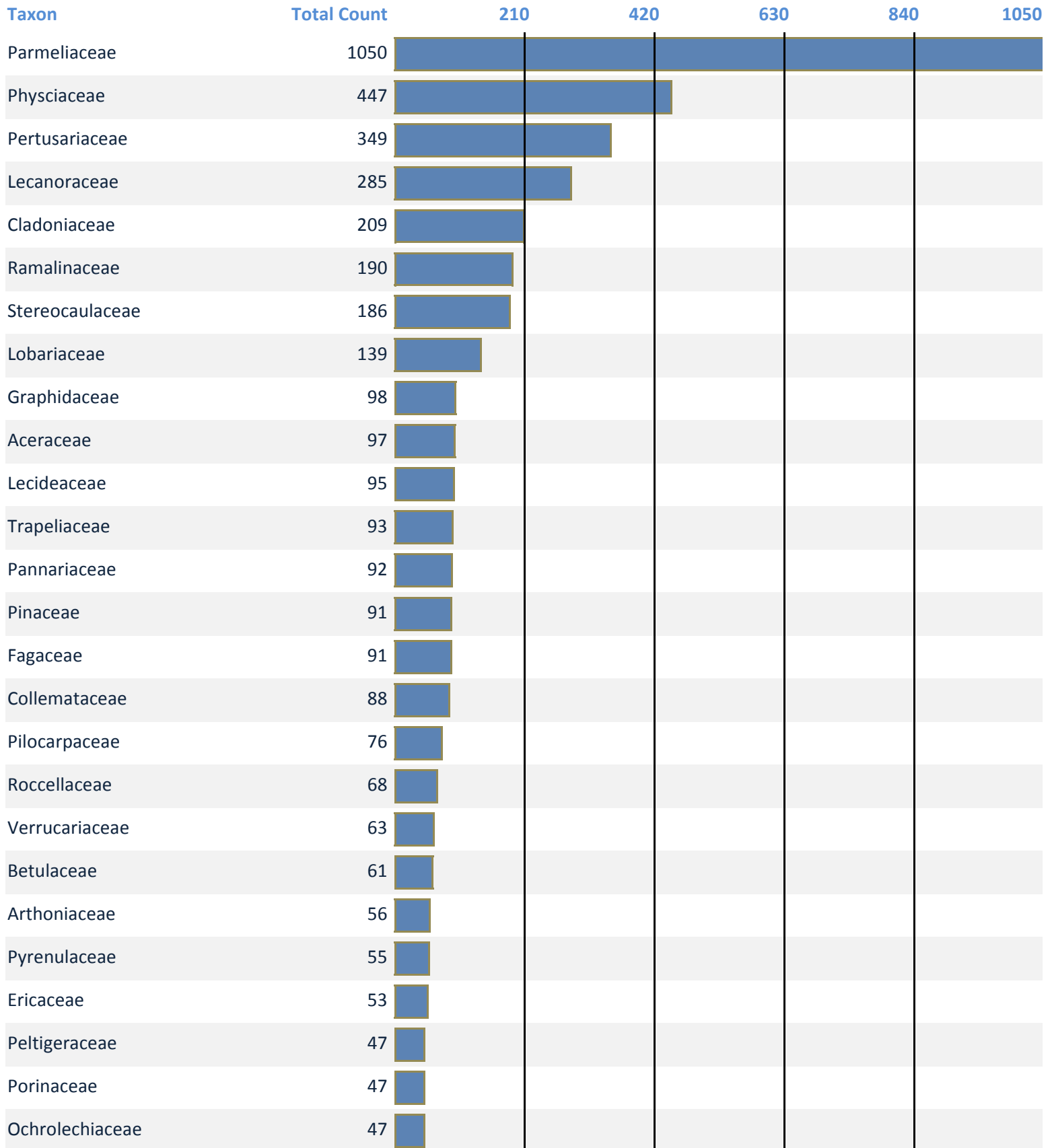


Specimen Counts for All Lichens Project Families

Project: NYBG Lichens



Taxon	Total Count	210	420	630	840	1050
Phlyctidaceae	42					
Rhizocarpaceae	40					
Teloschistaceae	38					
Fuscideaceae	38					
Chrysothricaceae	29					
Nephromataceae	29					
Magnoliaceae	27					
Umbilicariaceae	26					
Trypetheliaceae	25					
Coccocarpiaceae	23					
Ophioparmaceae	22					
Juglandaceae	22					
Gomphillaceae	21					
Mycoblastaceae	21					
Mycocaliciaceae	21					
Gyalectaceae	20					
Megasporaceae	19					
Acarosporaceae	17					
Ascomycota_family	17					
Megalosporaceae	17					
Rosaceae	17					
Nyssaceae	16					
Deuteromycota_family	15					
Strigulaceae	15					
Caliciaceae	14					
Mycoporaceae	13					
Aquifoliaceae	13					
Stictidaceae	13					

Taxon	Total Count	210	420	630	840	1050
Dermateaceae	13					
Monoblastiaceae	12					
Catillariaceae	11					
Baeomycetaceae	11					
Coniocybaceae	11					
Hippocastanaceae	11					
Hymeneliaceae	11					
Scoliciosporaceae	10					
Icmadophilaceae	9					
Candelariaceae	8					
Caprifoliaceae	7					
Odontotremataceae	7					
Mycosphaerellaceae	7					
Chaetothyriaceae	7					
Platyglloeales_family	6					
Hamamelidaceae	6					
Arthopyreniaceae	6					
Dacampiaceae	6					
Styracaceae	5					
Dothideales_family	5					
Psoraceae	5					
Ascomycetes_family	5					
Oleaceae	5					
Cupressaceae	4					
Tremellaceae	4					
Placynthiaceae	4					
Lichinaceae	4					
Fabaceae	4					

Taxon	Total Count	210	420	630	840	1050
Ectolechiaceae	3					
Platanaceae	3					
Tineidae	3					
Helotiales_family	3					
Annonaceae	2					
Bionectriaceae	2					
Ulmaceae	2					
Sphinctrinaceae	2					
Hyaloscyphaceae	2					
Cornaceae	2					
Clavariaceae	2					
Boletaceae	1					
Dematiaceae	1					
Carcinomycetaceae	1					
Brigantiaeaceae	1					
Hypocreaceae	1					
Patellariaceae	1					
Platyglloeaceae	1					
Ranunculaceae	1					
Agyriaceae	1					
Bryopsida_family	1					
Vitaceae	1					